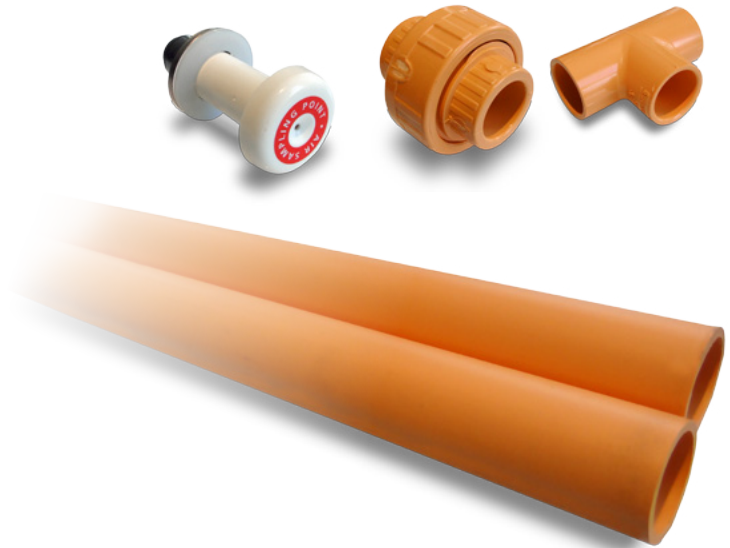




LIFE SAFETY &amp; INCIDENT MANAGEMENT

# Sampling Pipe and Fittings

For air aspirating smoke detection systems



## Description

Sampling pipe and fittings are an integral part of any aspirating smoke detection system. Selection of the correct type of pipe and suitable accessories is essential for optimum detector performance and unobtrusive pipeway design. Properly installed, and with the correct fittings, aspirating smoke detector sampling equipment will provide years of service and require virtually no maintenance.

Air sampling pipes and fittings available for use with EST air sampling smoke detection systems are designed specifically for use with low-pressure/high flow-rate aspirated smoke detection systems.

Pipe materials offer excellent rigidity, impact strength, as well as chemical and weather resistance. They are easy to cut and install, and bond permanently with pipe solvent cement. Their distinctive colors ensure the sampling pipe network is easily distinguishable from other services. Pipe is pre-printed along the length with the warning: "Smoke Detector Sampling Tube - Do Not Disturb".

## Features

- ABS and CPVC plastic components available
- Pre-printed pipe identifies it as part of a detection system and warns against disturbing the sampling network.
- Excellent rigidity and impact strength for easy installation and long service life.
- Pipe is easy to cut and bonds permanently to fittings with pipe solvent cement.
- Highly resistant to chemicals.
- Distinctive colors distinguish the pipe and fittings from other building services.
- Bright red ABS plastic pipe and fittings rated for extreme temperatures.
- Orange colored CPVC plastic pipe and components are plenum rated and have a flame/smoke spread of 25/50.

## Application

Two types of sampling pipe are available: ABS plastic (Acrylonitrile Butadiene Styrene), which is distinguished by its bright red color; and, CPVC plastic (Chlorinated polyvinyl chloride), which is colored orange. These products are designed specifically for use with low-pressure, high flow-rate aspirated smoke detection systems offered by EST.

### CPVC sampling pipe and fittings

Thanks to its cost effectiveness and its chemical resistance, CPVC air sampling pipe and fittings are ideal for the construction of air sampling pipe networks in most indoor settings. This type of air sampling pipe has a flame/smoke spread of 25/50 and is UL1887 listed for plenum applications.

### ABS sampling pipe and fittings

The outstanding physical properties of ABS plastic make it ideal for use in sampling systems where extreme environmental conditions are possible. Rated for temperatures that range from -40 °F to 140 °F (-40 °C to 60 °C), ABS plastic pipe and fittings are suitable for outdoor applications, as well as harsh environments such as near furnaces or in deep freeze cold storage facilities.

## Ordering Information

Part Number	Description
<b>CPVC Sampling Pipe &amp; Fittings</b>	
 CV11900	¾" ID x 1" OD x 15' length CPVC Sampling Pipe. Orange; UL 1887 Listed; Preprinted "Do Not Disturb – Aspirating Smoke Detection Pipe". Boxed set of 14 pcs totals 210 feet.
 CV10908	¾" CPVC Straight Coupling. Bag of 25.
 CV10906	¾" CPVC 90° socket elbow. Bag of 30.
 CV10905	¾" CPVC 45° socket elbow. Bag of 20.
 CV10927	¾" CPVC socket end cap. Bag of 25.
 CV10915	¾" CPVC socket union. Bag of 10.
 CV10909	¾" CPVC socket TEE fitting. Bag of 20.
 CV10935	Reducer Bushing-CPVC. Use with P/N CV10937 to connect Capillary Sampling Tube to sampling pipe. Bag of 25.
 CV10937	Quick Connect Fitting. Use with P/N CV10935 to connect Capillary Sampling Tube to sampling pipe. Bag of 25.

Part Number	Description
<b>ABS Sampling Pipe &amp; Fittings</b>	
 CM10900	¾" ID x 1" OD x 10' length ABS Sampling Pipe. Red; Preprinted "Do Not Disturb – Aspirating Smoke Detection Pipe".
 CM10908	¾" Red ABS Straight Coupling.
 CM10906	¾" Red ABS Sweeping 90° Elbow.
 CM10905	¾" Red ABS 45° Elbow.
<b>Sampling Ports, Fittings &amp; Accessories</b>	
 CM10943	Sampling Point Assembly. Detachable remote sampling point.
 CM10919	Patress style detachable sampling Point .
 CM10944	Right Angle Patress style detachable Sampling Point.

Part Number	Description
 CM10913	Bulkhead style detachable sampling point. Used for sampling within cabinets and enclosures.
 CM10914	Press Fit Calibrated Sampling Point (white). Intended to be press fitted into 3/8" capillary tubing.
 CM10923	In-line Sampling Point Adaptor - ABS. 3/4" to 3/8" quick connect fitting.
 CM10922	End-of-line Sampling Point Adaptor - ABS. 3/4" to 3/8" quick connect fitting.
 CM10941	5-Point Manifold. 3/4" end-of-line to five 3/8" quick connects for sampling points.
 CM10963-250	1/4" ID x 3/8" OD Capillary Sampling Tube. Flexible FPE rated polyethalene; Black with red stripe; Max temp 175°F; Meets flame spread, fuel contribution and smoke density requirements of ASTM E84-8/A Tunnel Test; UV resistant; 250 ft roll.

Part Number	Description
<b>Pipe Accessories</b>	
 CM10933	3/4" Sample Point Repair Saddle. Use for repairing incorrectly placed or drilled holes in 3/4" sampling pipe.
 CM10960	Sampling Point Identification Decals. Roll of 100 self adhesive sample point labels. Placement aids identification by service personnel.
 CV10961	Sampling Pipe Decals. Roll of 100. Use for labeling sample pipe per NFPA guidelines. Reads "Smoke Detector Sampling Pipe - Do Not Disturb". Made of moisture resistant material.
 9-10954-25	3/4" Red ABS Pipe Clip, 25 Pack
 9-10954-100	3/4" Red ABS Pipe Clip, 100 Pack
 CV10931	One-Hole Wrap-Strap for CPVC and ABS Pipe. Securely supports 3/4" sample pipe. Carbon steel with electro-zinc plated finish. Includes 1 hex-head screw for 1 hole. Bag of 100.
 CV10934	2 hole strap for 3/4" CPVC pipe. Flared edges and Electro Zinc plated for CPVC. Box of 100.
 CV10935	Stand-off 2 hole strap for 3/4" CPVC pipe. Position pipe 1 1/2" off surface. Comply with NFPA 13. Box of 100.
<b>Fittings and Adaptors</b>	
CM10902	3/4" ABS to 22mm Copper Tube Adapter



LIFE SAFETY & INCIDENT MANAGEMENT

**Contact us**

Phone: 800-655-4497 (Option 4)

Email: [edwards.fire@carrier.com](mailto:edwards.fire@carrier.com)

Website: [edwardsfiresafety.com](http://edwardsfiresafety.com)

8985 Town Center Pkwy  
Bradenton, FL 34202

© 2021 Carrier  
All rights reserved.

---